

ELECTROMECHANICAL MAGNETIC SENSORS Type Ø 13 mm, Ø 15.5 mm, 28.6 x 18 x 6.4 mm

Type	Ø 13 mm	Ø 13 mm	Ø 15.5 mm	28.6 x 18 x 6.4 mm
Enclosure material	PA, black	PA, black	PC, grey	PA, black
Nominal sensing distance (San)	9 mm	20 mm	6 mm	8 mm
Type of connection	Cable 1 m	Cable 1 m	Connector	Cable 1.5 m
Reference magnet	T-62 N/S	T-62 N/S	T-62 N/S	TK-11-11
Special feature				

NO contact

NC contact	6310136711 MAK-3611-A-1			
-------------------	-----------------------------------	--	--	--

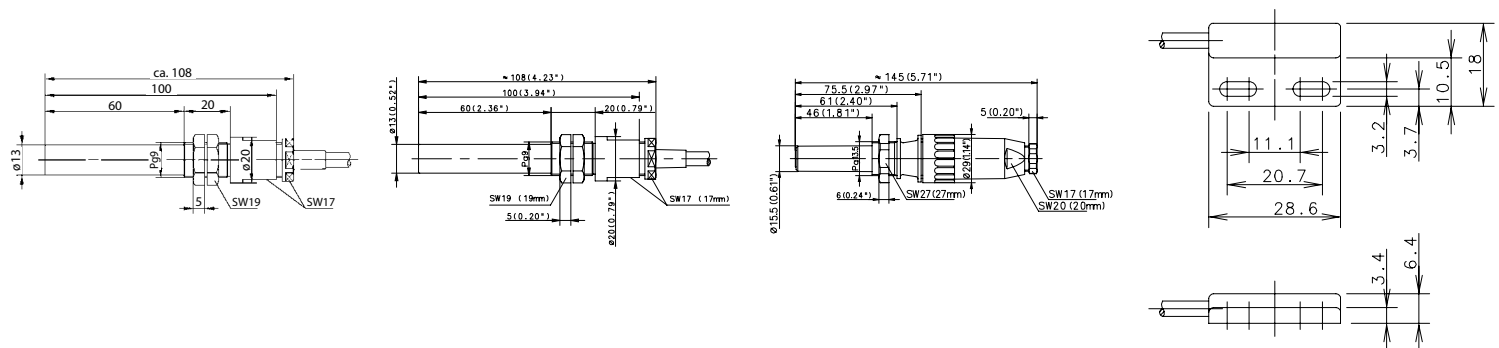
Changeover contact			6317304313 MAK-0413-M-S	6410311368 MAK-1113-1,5
---------------------------	--	--	-----------------------------------	-----------------------------------

bistable		6310536617 MAK-3615-L-1		
-----------------	--	-----------------------------------	--	--

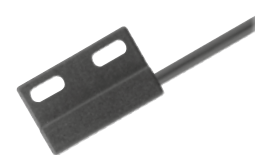
Technical data				
Switching voltage (max)	250 V DC / AC	250 V	250 V	130 V
Switching current (max)	3 A	1 A	1 A	0,25 A
Max. switching capacity	120 VA	60 VA	80 VA	3 VA
Function/operating voltage indicator	–	–	–	–

Mechanical data				
Ambient temperature (min/max)	–5°C/+70°C	–5°C/+70°C	–5°C/+70°C	–20°C/+70°C
Protection class in accordance with IEC 529, EN 60529	IP67	IP67	IP65	IP67
Connection	2 x AWG 20	3 x 0.75 mm ²	Amphenol plug connection	3 x 0.14 mm ²

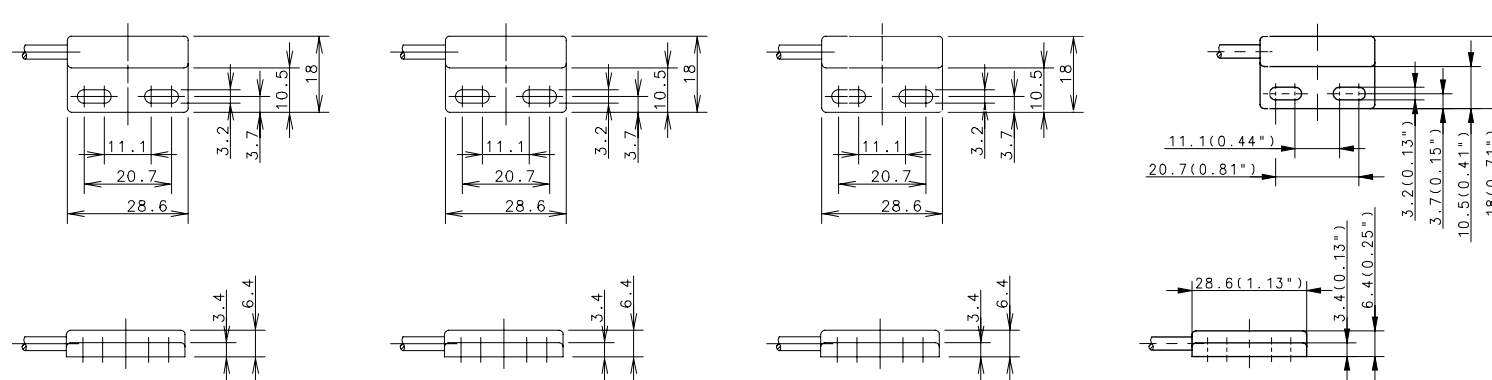
Approval – observe the restricted electrical data in the data sheet



ELECTROMECHANICAL MAGNETIC SENSORS Type 28.6x18x6.4 mm



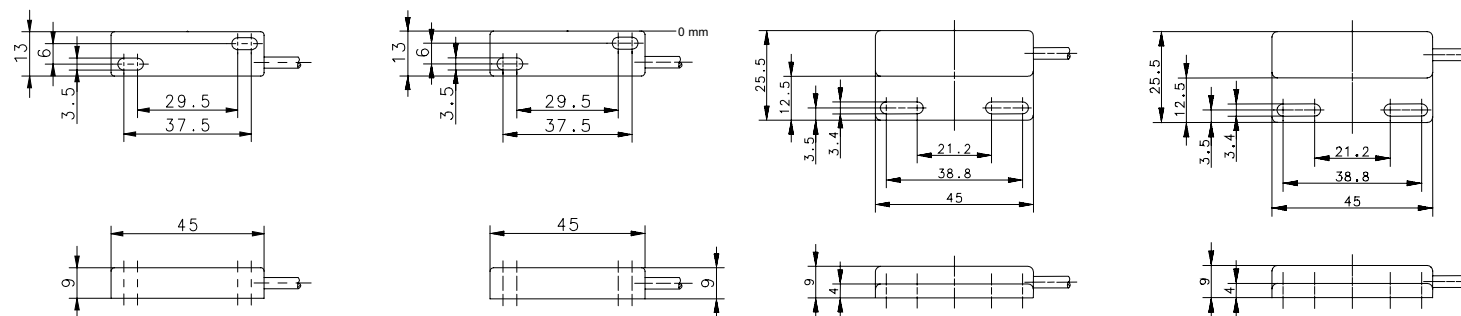
Type	28.6 x 18 x 6.4 mm	28.6 x 18 x 6.4 mm	28.6 x 18 x 6.4 mm	28.6 x 18 x 6.4 mm
Enclosure material	PA, black	PA, black	PA, black	PA, black
Nominal sensing distance (San)	8 mm	10 mm	12 mm	30 mm
Type of connection	Cable 10 m	Cable 1 m	Cable 1 m	Cable 5 m
Reference magnet	TK-11-11	TK-11-11	TK-11-11	T-67 N/S
Special feature				
NO contact		6311211692 MAK-1112-F-1		
NC contact	6311111665 MAK-1111-10			
Changeover contact			6310311693 MAK-1113-D-1	
bistable				6311411603 MAK-1114-B-5
Technical data				
Switching voltage (max)	130 V AC, 175 V DC	250 V AC / DC	125 V AC / 175 V DC	250 V
Switching current (max)	0.25 A	1 A	280 mA AC / 400 mA DC	0.5 A
Max. switching capacity	5 VA	100 VA	5 VA	10 VA
Function/operating voltage indicator	-	-	-	-
Mechanical data				
Ambient temperature (min/max)	-5°C/+70°C	-5°C/+70°C	-5°C/+70°C	-5°C/+70°C
Protection class in accordance with IEC 529, EN 60529	IP67	IP67	IP67	IP67
Connection	2 x 0.14 mm ²	2 x AWG 26	3 x AWG 26	2 x 0.14 mm ²
Approval – observe the restricted electrical data in the data sheet				



ELECTROMECHANICAL MAGNETIC SENSORS Type 45 x 13 x 9 mm, 45 x 25.5 x 9 mm



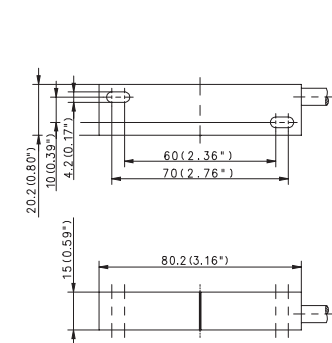
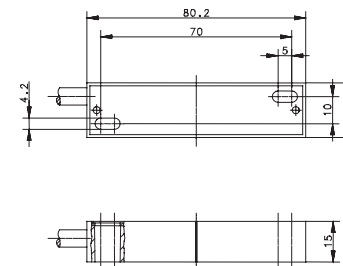
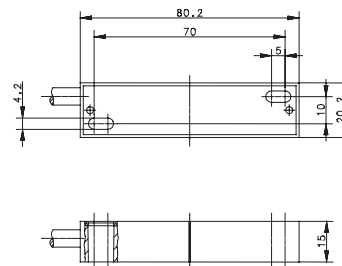
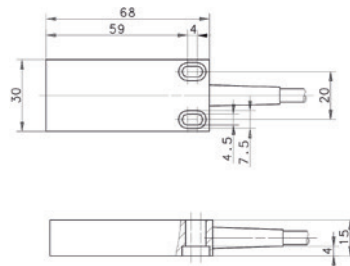
Type	45 x 13 x 9 mm	45 x 13 x 9 mm	45 x 25.5 x 9 mm	45 x 25.5 x 9 mm
Enclosure material	PA, black	PA, black	PA, black	PA, black
Nominal sensing distance (San)	10 mm	10 mm	10 mm	12 mm
Type of connection	Cable 2 m	Cable 3 m	Cable 1 m	Cable 1 m
Reference magnet	TK-11-01	TK-11-01	TK-45	TK-45
Special feature				
NO contact	6311201095 MAK-0112-B-2		6311245539 MAK-4512-B-1	
NC contact				
Changeover contact		6310301666 MAK-0113-3		6316345722 MAK-4513-D-1
bistable				
Technical data				
Switching voltage (max)	250 V	175 V	250 V	125 V AC / 175 V DC
Switching current (max)	0.5 A	0.25 A	0.5 A	280 mA AC / 400 mA DC
Max. switching power	10 VA	10 VA	10 VA	5 VA
Function/operating voltage indicator	-	-	-	-
Mechanical data				
Ambient temperature (min/max)	-5°C/+70°C	-5°C/+70°C	-5°C/+70°C	-5°C/+70°C
Protection class in accordance with IEC 529, EN 60529	IP67	IP67	IP67	IP67
Connection	2 x 0.14 mm ²	3 x 0.14 mm ²	2 x 0.14 mm ²	3 x AWG 26
Approval – observe the restricted electrical data in the data sheet				



ELECTROMECHANICAL MAGNETIC SENSORS Type 68x30x15 mm, 80x20x15 mm



Type	68 x 30 x 15 mm	80 x 20 x 15 mm	80 x 20 x 15 mm	80 x 20 x 15 mm
Enclosure material	PC, red	GDAISi12, red	GDAISi12, red	GDAISi12, red
Nominal sensing distance (San)	29 mm	5-40 mm	18 mm	20 mm
Type of connection	Cable 1 m	Cable 3 m	Cable 5 m	Cable 3 m
Reference magnet	T-62 N/S	TK-21-02	TA-21-02	T-62 N/S
Special feature			Temperature	Temperature
NO contact		6314402674 MAA-0214-A-3	6314202522 MAA-0212-FT-5	
NC contact				
Changeover contact	6316313699 MAK-1313-D-1			
bistable				6314402566 MAA-0214-FT-3
Technical data				
Switching voltage (max)	125 V AC / 175 V DC	250 V AC / DC	250 V	250 V
Switching current (max)	280 mA AC / 400 mA DC	3 A	3 A	3 A
Max. switching power	5 VA	120 VA	100 VA	100 VA
Function/operating voltage indicator	-	-	-	-
Mechanical data				
Ambient temperature (min/max)	-5°C/+70°C	-10°C/+80°C	-40°C/+150°C	-40°C/+150°C
Protection class in accordance with IEC 529, EN 60529	IP67	IP67	IP67	IP67
Connection	3 x AWG 20	2 x AWG 20	3 x 0.75 mm ²	3 x 0.75 mm ²
Approval – observe the restricted electrical data in the data sheet				



ELECTROMECHANICAL MAGNETIC SENSORS Type 80x20x15 mm



Type	80 x 20 x 15 mm	80 x 20 x 15 mm	80 x 20 x 15 mm	80 x 20 x 15 mm
Enclosure material	GDAISi12, red	GDAISi12, red	PA, black	PA, red
Nominal sensing distance (San)	25 mm	30 mm	10 mm	12 mm
Type of connection	Connector M8	Cable 1 m	Cable 3 m	Cable 2 m
Reference magnet	TA-21-02	TA-21-02	T-67 N/S	TK-21-12
Special feature		Temperature		

NO contact

NC contact

6314112214

MAK-1211-F-2

Changeover contact

6310302636

MAA-0213-STK

6316302389

MAA-0213-LT-1

bistable

6319402691

MAK-0214-A-3

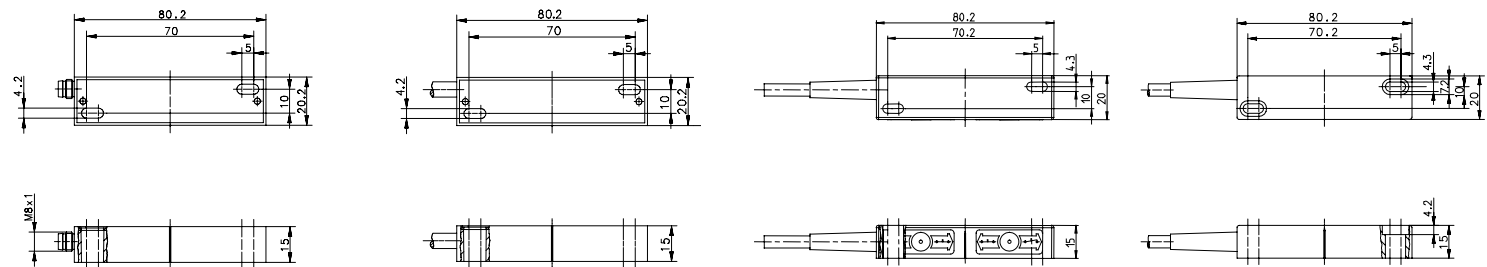
Technische Daten

Switching voltage (max)	50 V AC / 75 V DC	250 V	250 V AC / DC	250 V
Switching current (max)	1 A	1 A	3 A	3 A
Max. switching power	3 VA	60 VA	120 VA	120 VA
Function/operating voltage indicator	-	-	-	-


Mechanical data

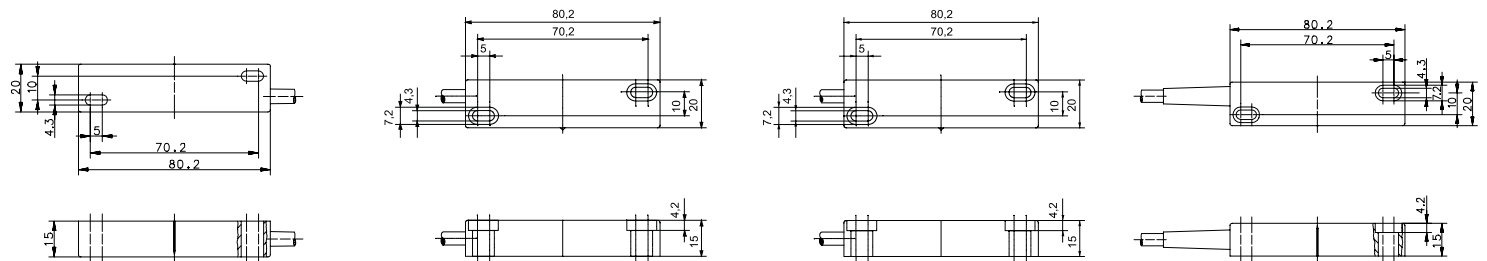
Ambient temperature (min/max)	-30°C/+80°C	-40°C/+150°C	-5°C/+70°C	-5°C/+70°C
Protection class in accordance with IEC 529, EN 60529	IP65	IP67	IP67	IP67
Connection	M8 x 1	4 x 0.75 mm ²	2 x AWG 20	2 x 0.5 mm ²

Approval – observe the restricted electrical data in the data sheet





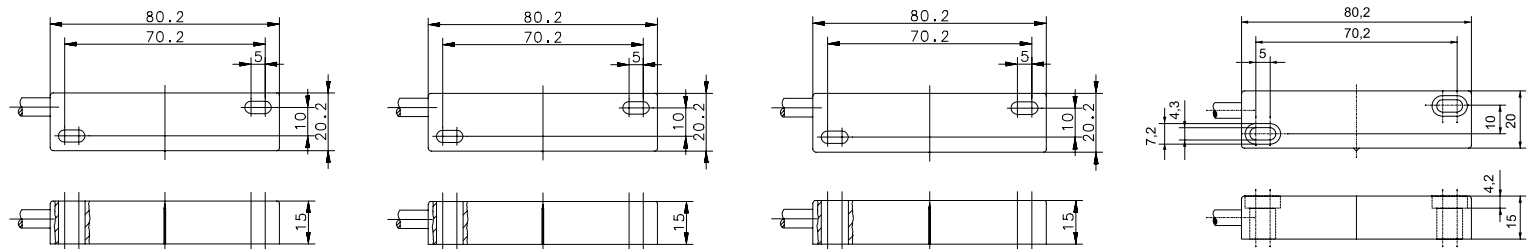
Type	80 x 20 x 15 mm	80 x 20 x 15 mm	80 x 20 x 15 mm	80 x 20 x 15 mm
Enclosure material	PA, black	PA, red	PA, red	PA, red
Nominal sensing distance (San)	18 mm	18 mm	18 mm	–
Type of connection	Con. cable 0.9 m with plug connector	Cable 1 m	Cable 2 m	Cable 5 m
Reference magnet	TK-21-02	TK-21-02	T-62 N/S	–
Special feature	Temperature			
NO contact	6420202219 MAK-0222-L-0,8-STK			
NC contact				
Changeover contact		6315312696 MAK-1213-D-1		
bistable			6310412698 MAK-1214-A-2	
Bistable Changeover contact				6317512527 MAK-1215-M-5
Technical data				
Switching voltage (max)	250 V	125 V AC / 175 V DC	250 V AC / DC	250 V
Switching current (max)	1 A	280 mA AC / 400 mA DC	3 A	1 A
Max. switching power	60 VA	5 VA	120 VA	80 VA
Function/operating voltage indicator	–	–	–	–
Mechanical data				
Ambient temperature (min/max)	–30°C/+70°C	–5°C/+70°C	–5°C/+70°C	–5°C/+70°C
Protection class in accordance with IEC 529, EN 60529	IP65	IP67	IP67	IP67
Connection	Connection cable with plug connector	3 x 1.5 mm ²	2 x AWG 20	3 x 0.5 mm ²
Approval – observe the restricted electrical data in the data sheet				



ELECTROMECHANICAL MAGNETIC SENSORS Type 80x20x15 mm



Type	80 x 20 x 15 mm	80 x 20 x 15 mm	80 x 20 x 15 mm	80 x 20 x 15 mm
Enclosure material	PC, black	PA, black	PA, black	PA, red
Nominal sensing distance (San)	18 mm	21 mm	21 mm	21 mm
Type of connection	Cable 1 m	Cable 1 m	Cable 1 m	Cable 1 m
Reference magnet	TK-21-02	TK-21-02	TK-21-02	TK-21-12
Special feature				
NO contact		6312202687 MAK-0212-A-1	6314202204 MAK-0212-F-1	6314212695 MAK-1212-A-1
NC contact				
Changeover contact	6315302689 MAK-0213-D-1			
bistable				
Technical data				
Switching voltage (max)	125 V AC / 175 V DC	250 V AC / DC	250 V	250 V AC / DC
Switching current (max)	280 mA AC / 400 mA DC	3 A	3 A	3 A
Max. switching power	5 VA	120 VA	100 VA	120 VA
Function/operating voltage indicator	-	-	-	-
Mechanical data				
Ambient temperature (min/max)	-5°C/+70°C	-5°C/+70°C	-5°C/+70°C	-5°C/+70°C
Protection class in accordance with IEC 529, EN 60529	IP67	IP67	IP67	IP67
Connection	3 x AWG 20	2 x AWG 20	2 x 0.75 mm ²	2 x AWG 20
Approval – observe the restricted electrical data in the data sheet				



ELECTROMECHANICAL MAGNETIC SENSORS Type 80x20x15 mm

Type	80 x 20 x 15 mm	80 x 20 x 15 mm
Enclosure material	PA, black	PA, red
Nominal sensing distance (San)	24 mm	24 mm
Type of connection	Cable 1 m	Cable 1 m
Reference magnet	TA-21-02	TK-21-12
Special feature		

NO contact

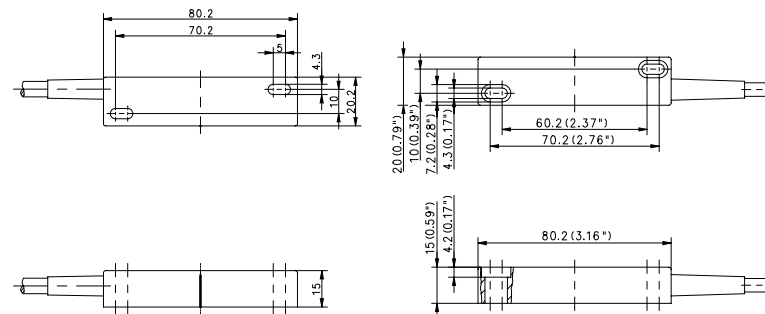
NC contact

Changeover contact	6316302206 MAK-0213-L-1	6316312220 MAK-1213-L-1
---------------------------	-----------------------------------	-----------------------------------

bistable

Technical data		
Switching voltage (max)	250 V	250 V
Switching current (max)	1 A	1 A
Max. switching power	60 VA	60 VA
Function/operating voltage indicator	-	-
Mechanical data		
Ambient temperature (min/max)	-5°C/+70°C	-5°C/+70°C
Protection class in accordance with IEC 529, EN 60529	IP67	IP67
Connection	3 x 0.5 mm ²	3 x 0.5 mm ²

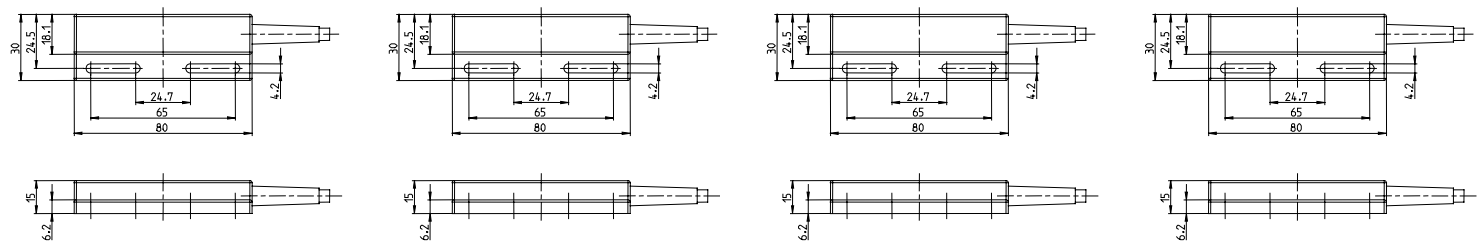
Approval – observe the restricted electrical data in the data sheet



ELECTROMECHANICAL MAGNETIC SENSORS Type 80x30x15 mm



Type	80 x 30 x 15 mm	80 x 30 x 15 mm	80 x 30 x 15 mm	80 x 30 x 15 mm
Enclosure material	PA, black	PA, black	PA, black	PA, black
Nominal sensing distance (San)	8 mm	18 mm	7-23 mm	19 mm
Type of connection	Cable 1 m	Cable 1 m	Cable 2 m	Cable 1 m
Reference magnet	TK-44	T-62 N/S	T-62 N/S	TK-44
Special feature				
NO contact				6314244718 MAK-4412-A-1
NC contact	6314144717 MAK-4411-A-1			
Changeover contact				
bistable		6310444720 MAK-4414-A-1		
Bistable Changeover contact			6316544621 MAK-4415-L-2	
Technical data				
Switching voltage (max)	250 V AC / DC	250 V AC / DC	250 V	250 V AC / DC
Switching current (max)	3 A	3 A	1 A	3 A
Max. switching power	120 VA	120 VA	60 VA	120 VA
Function/operating voltage indicator	-	-	-	-
Mechanical data				
Ambient temperature (min/max)	-5°C/+70°C	-5°C/+60°C	-5°C/+70°C	-5°C/+70°C
Protection class in accordance with IEC 529, EN 60529	IP67	IP67	IP67	IP67
Connection	2 x AWG 20	2 x AWG 20	3 x 0.5 mm ²	2 x AWG 20
Approval – observe the restricted electrical data in the data sheet				



ELECTROMECHANICAL MAGNETIC SENSORS Type 80x30x15 mm, 85x24x26 mm

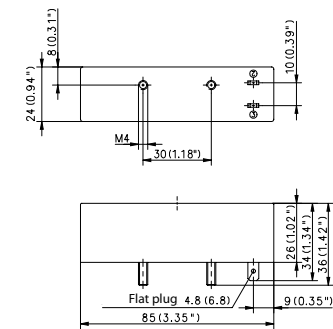
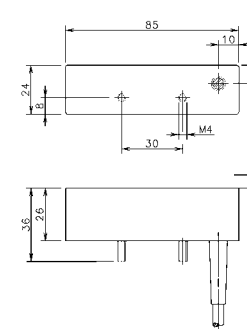
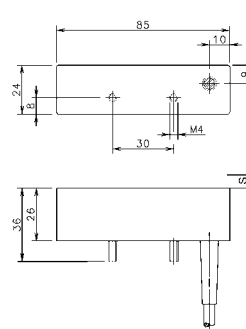
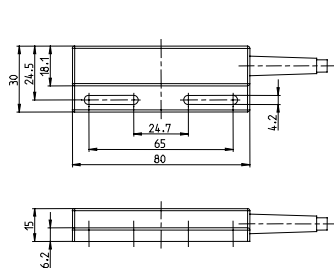


Type	80 x 30 x 15 mm	85 x 24 x 26 mm	85 x 24 x 26 mm	85 x 24 x 26 mm
Enclosure material	PA, black	PBT, black	PBT, black	PBT, black
Nominal sensing distance (San)	22 mm	2-15 mm	17 mm	24 mm
Type of connection	Cable 1 m	Cable 3 m	Cable 1 m	Flat plug
Reference magnet	TK-44	T-67 N/S	T-62 N/S	T-69 N/S
Special feature				Flat plug K4.8

NO contact




NC contact

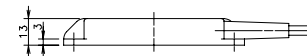
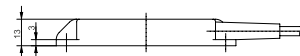
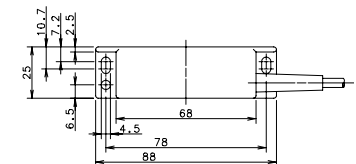
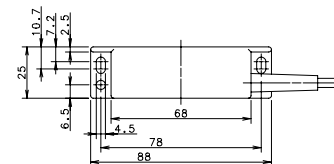
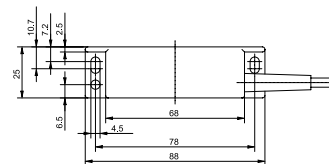
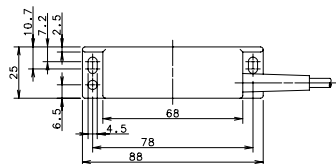
Changeover contact	6317344719 MAK-4413-D-1			
bistable		6314432706 MAK-3214-A-3	6310432707 MAK-3214-A-1	6310432590 MAK-3214-P-STK4.8
Technical data				
Switching voltage (max)	125 V AC / 175 V DC	250 V AC / DC	250 V	250 V
Switching current (max)	280 mA AC / 400 mA DC	3 A	3 A	5 A
Max. switching power	5 VA	120 VA	120 VA	250 VA
Function/operating voltage indicator	-	-	-	-
Mechanical data				
Ambient temperature (min/max)	-5°C/+70°C	-5°C/+70°C	-5°C/+70°C	-20°C/+70°C
Protection class in accordance with IEC 529, EN 60529	IP67	IP67	IP67	IP67
Connection	3 x AWG 20	2 x AWG 20	2 x AWG 20	Flat plug 4.8
Approval – observe the restricted electrical data in the data sheet				



ELECTROMECHANICAL MAGNETIC SENSORS Type 88x25x13 mm



Type	88 x 25 x 13 mm	88 x 25 x 13 mm	88 x 25 x 13 mm	88 x 25 x 13 mm
Enclosure material	PA, black	PA, black	PA, black	PA, black
Nominal sensing distance (San)	18 mm	19 mm	2-20 mm	22 mm
Type of connection	Cable 5 m	Cable 1 m	Cable 1 m	Cable 1 m
Reference magnet	T-62 N/S	TK-42	T-62 N/S	TK-42
Special feature	2 NO contacts			
NO contact	6420242220 MAK-4222-5	6314242713 MAK-4212-A-1		
NC contact				
Changeover contact				6317342714 MAK-4213-D-1
bistable			6310442715 MAK-4214-A-1	
Technical data				
Switching voltage (max)	230 V	30 V AC / 60 V DC	250 V AC / DC	125 V AC / 175 V DC
Switching current (max)	3 A	2 A	3 A	280 mA AC / 400 mA DC
Max. switching power	100 VA	100 VA	120 VA	5 VA
Function/operating voltage indicator	-	-	-	-
Mechanical data				
Ambient temperature (min/max)	-5°C/+70°C	-5°C/+70°C	-5°C/+70°C	-5°C/+70°C
Protection class in accordance with IEC 529, EN 60529	IP67	IP67	IP67	IP67
Connection	4 x 0.5 mm ²	2 x AWG 20	2 x AWG 20	3 x AWG 20
Approval – observe the restricted electrical data in the data sheet				



ELECTROMECHANICAL MAGNETIC SENSORS Type 88x25x13 mm, 100x58x29.5 mm



Type	88 x 25 x 13 mm	100 x 58 x 29.5 mm	100 x 58 x 29.5 mm	100 x 58 x 29.5 mm
Enclosure material	PA, black	Aluminium	Aluminium	GDAISi12
Nominal sensing distance (San)	5-25 mm	10 mm	20 mm	15 mm
Type of connection	Cable 3 m	Screw terminal	Screw terminal	Screw terminal
Reference magnet	T-69 N/S	TA-31	TA-31	T-62 N/S
Special feature				
NO contact			6314203675 MAA-0312-A	
NC contact				
Changeover contact		6317303312 MAA-0313-M		
bistable	6310442622 MAK-4214-P-3			6319403677 MAA-0314-A
Technical data				
Switching voltage (max)	250 V	250 V DC / AC	250 V DC / AC	250 V DC / AC
Switching current (max)	5 A	1 A	3 A	3 A
Max. switching power	250 VA	80 VA	120 VA	120 VA
Function/operating voltage indicator	-	-	-	-
Mechanical data				
Ambient temperature (min/max)	-5°C/+70°C	-5°C/+70°C	-15°C/+70°C	-15°C/+70°C
Protection class in accordance with IEC 529, EN 60529	IP67	IP67	IP65	IP65
Connection	2 x 0.5 mm ²	Screw terminal	Screw terminal	Screw terminal

Approval – observe the restricted electrical data in the data sheet

